



United States Department of Agriculture

Soil and Water Conservation Society Annual Conference

NRCS Chief Jason Weller

July 2014





United States Department of Agriculture



70 percent of land in the continental U.S. is privately owned





United States Department of Agriculture

Current population: 7 BILLION



In the next 90 years: 10 BILLION



United States Department of Agriculture
Natural Resources Conservation Service



United States Department of Agriculture

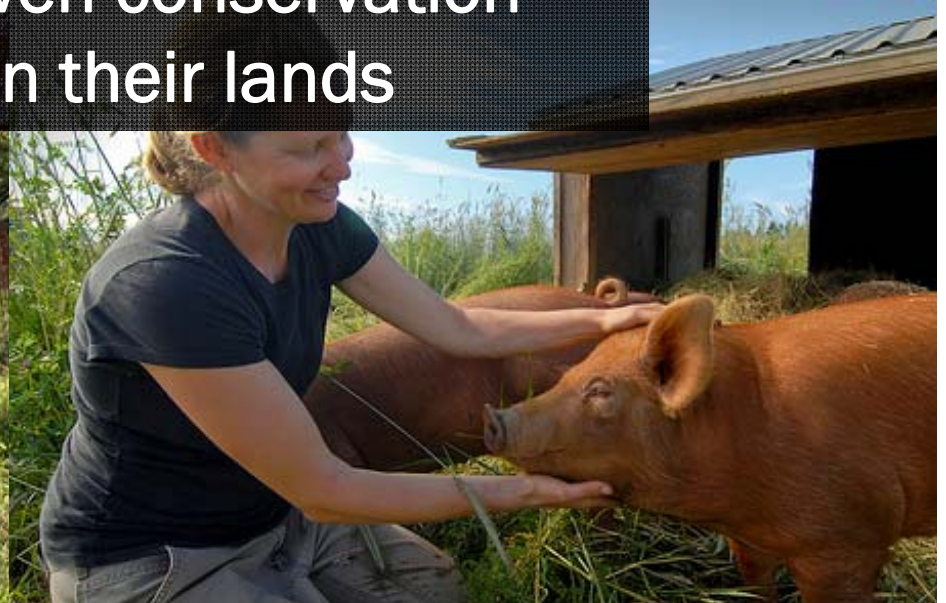




United States Department of Agriculture

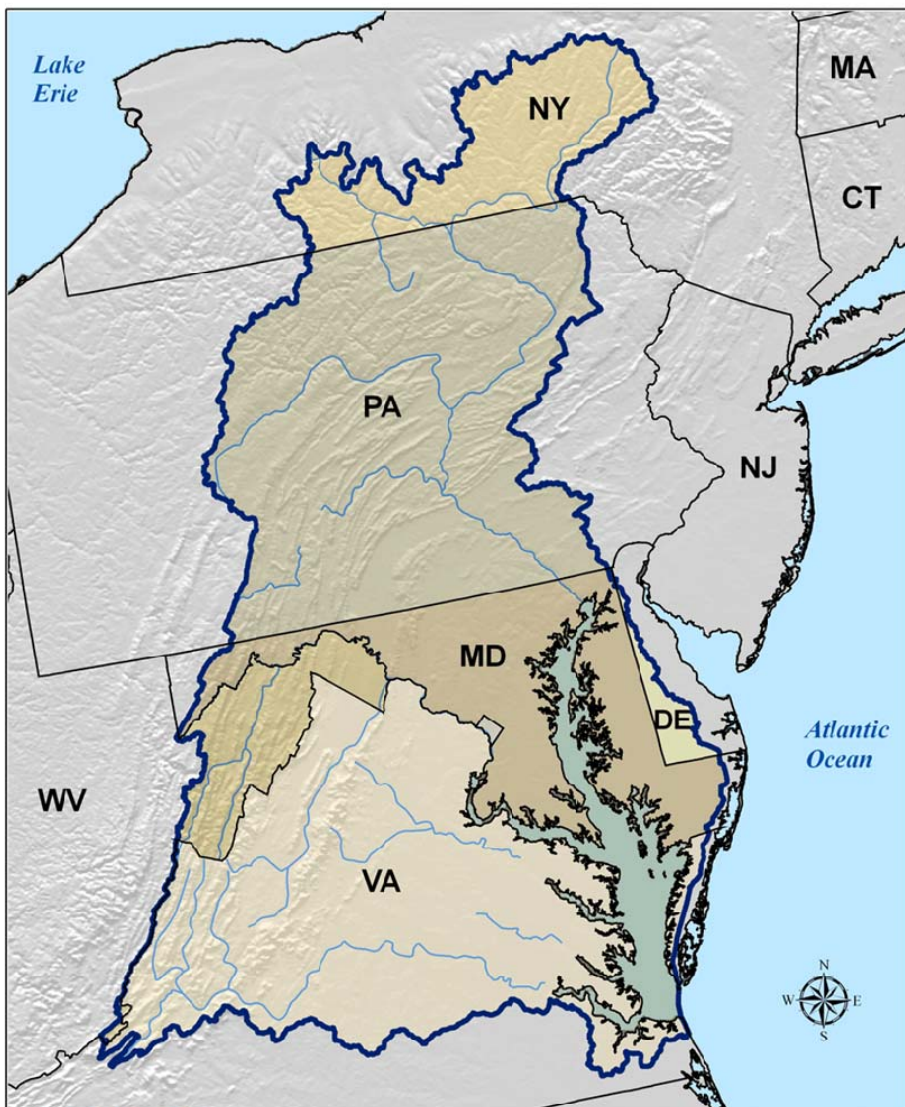


NRCS helps private landowners
implement proven conservation
practices on their lands





United States Department of Agriculture



U.S. Department of Agriculture
Natural Resources Conservation Service
Resources Inventory and Assessment Division
Washington, D.C. October 2008

Map ID: 10365

Source: Chesapeake Bay Watershed Program

USDA Conservation in CHESAPEAKE BAY

Natural Resources Conservation Service

WATERSHED STATES

Chesapeake Bay Watershed touches

6 STATES,
 **83,800+**
farms & ranches,
and
17 MILLION 



EROSION CONTROL

Since 2006, average edge-of-field
sediment losses decreased by

15.1 MILLION 
per year
which is enough soil to fill
150,000



TRAIN CARS

stretching **1,704 MILES,**
further than from Washington, D.C.
to Albuquerque, N.M. per year.



CONSERVATION ON THE GROUND



97%
Acres with some form of
erosion control practice.



2006-2011
Loss of Nitrogen into nearby waterways
reduced by **48.4 million pounds/year**



Loss of Phosphorus into
nearby waterways
reduced by **7.1 million pounds**

Sediment entering the bay was reduced by **8 percent.**
Nitrogen was reduced by **6 percent.**
Phosphorus was reduced by **5 percent.**



CLEANER 

All estimates from the Conservation Effects Assessment Project, 2011.
NRCS is an equal opportunity provider and employer.



United States Department of Agriculture



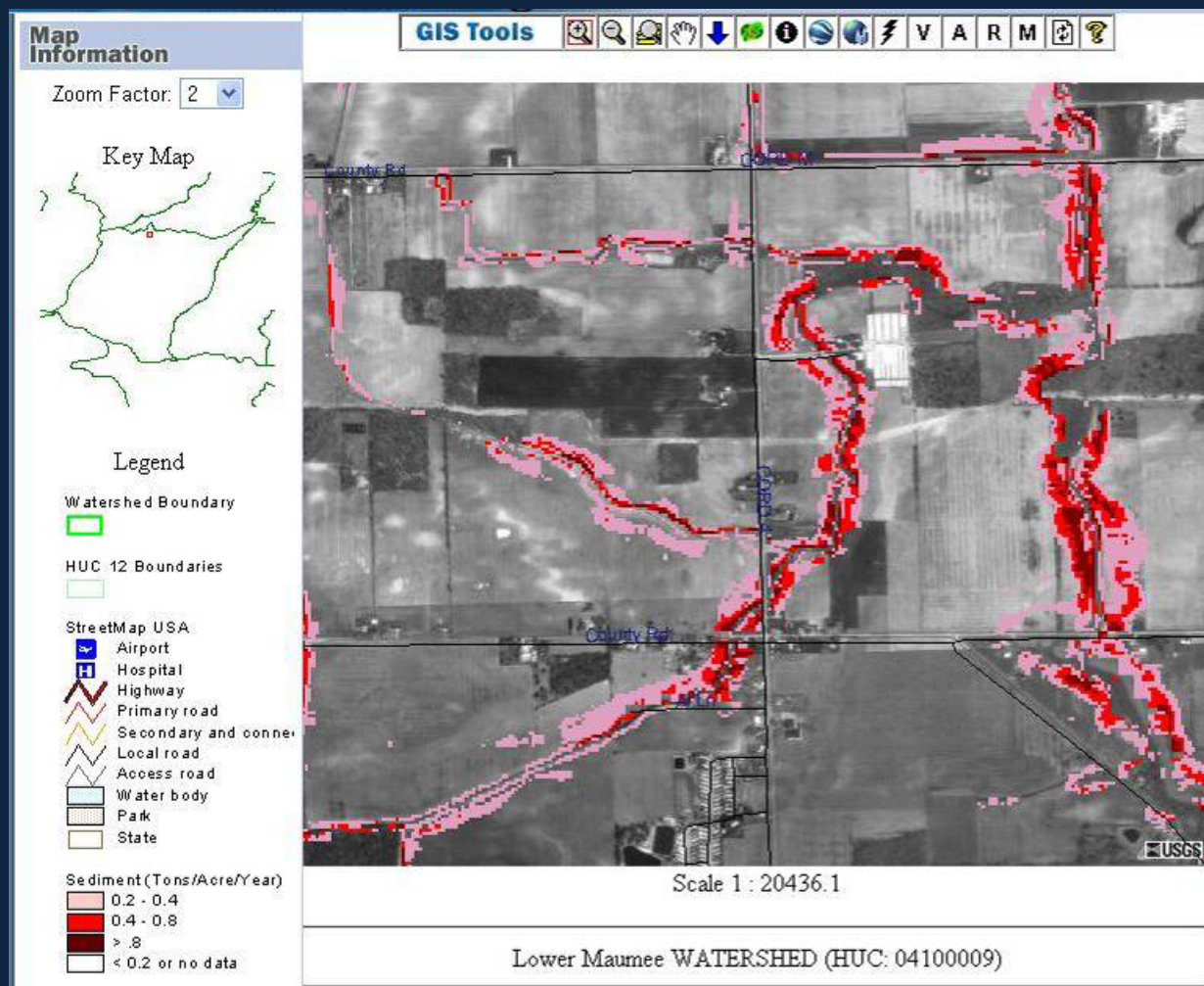


United States Department of Agriculture





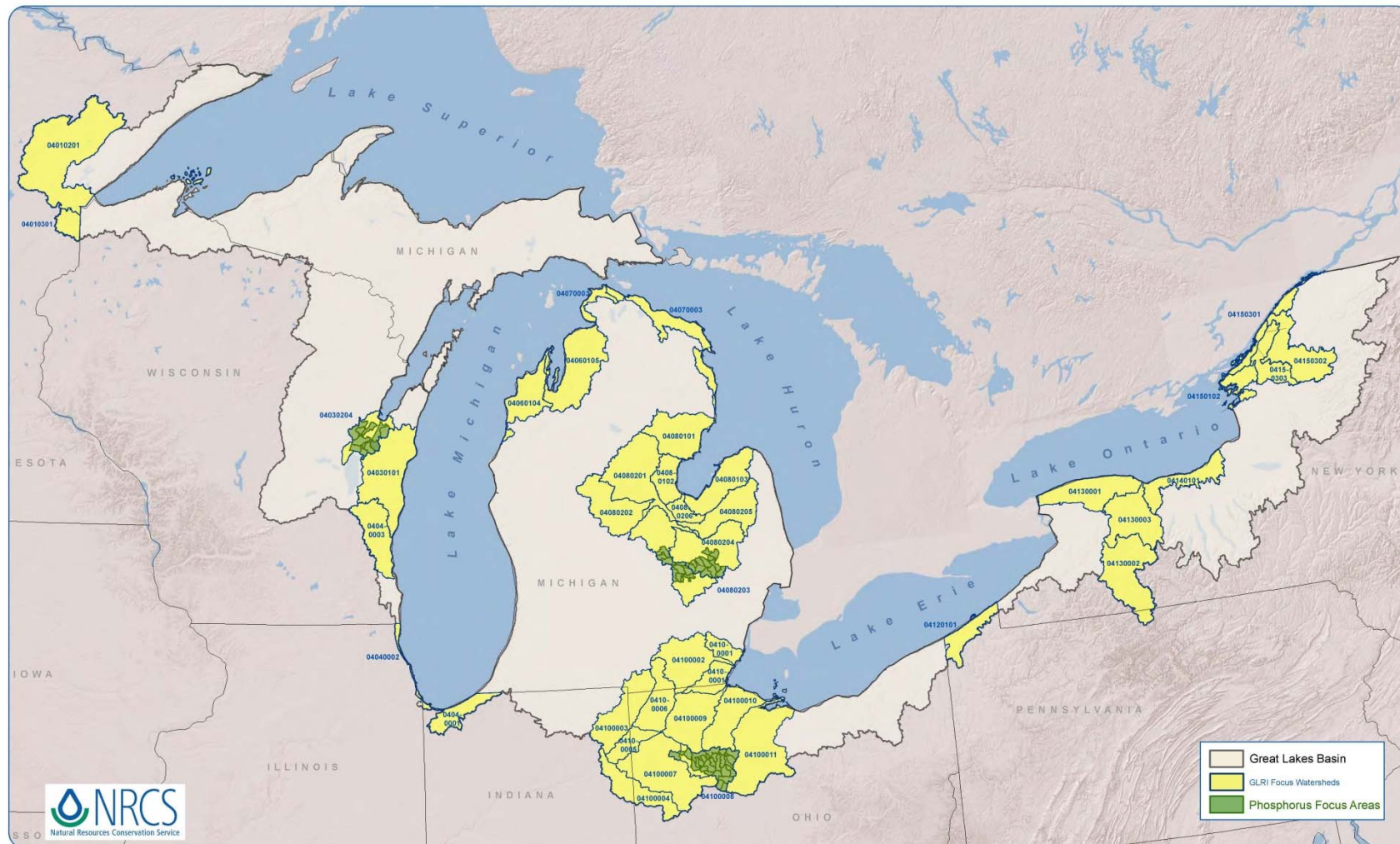
United States Department of Agriculture





United States Department of Agriculture

Great Lakes Restoration Initiative (GLRI) Priority Watersheds and Phosphorus Focus Areas



Dataset Sources: ESRI StreetMap World 2D
ESRI ShadedRelief World 2D
WBD 12 Digit 24K HUC
WBD 8 Digit 24K HUC

January 2014



United States Department of Agriculture



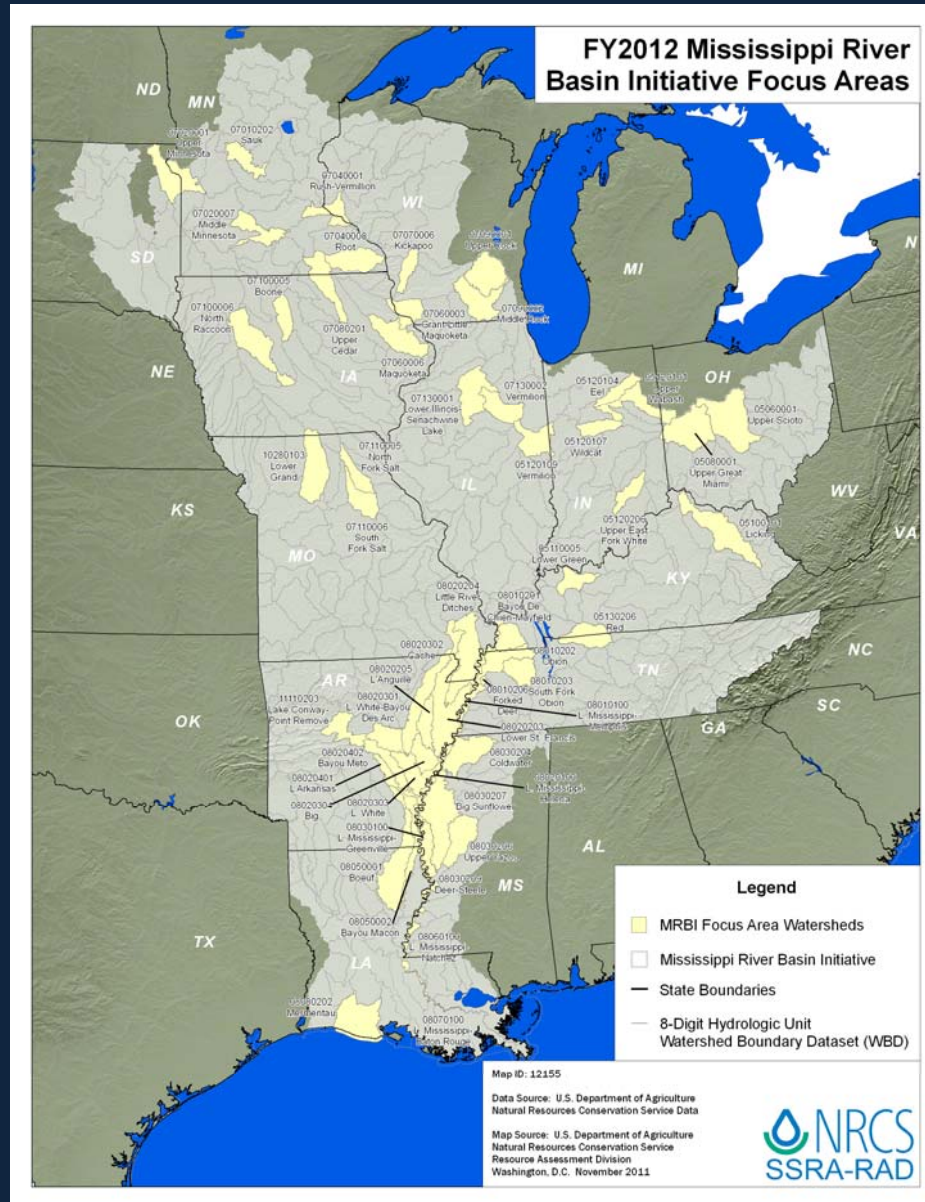


United States Department of Agriculture





United States Department of Agriculture





United States Department of Agriculture





United States Department of Agriculture





United States Department of Agriculture



USDA NRCS
United States Department of Agriculture
Natural Resources Conservation Service

unlock your farm's potential

www.nrcs.usda.gov

Soil Health Management Systems can:

- **reduce** input costs,
- **protect** against drought and
- **increase** production.

Learn how to **unlock the secrets in YOUR soil** today!

USDA is an equal opportunity provider and employer.

unlock the
SECRETS
IN THE
SOIL



United States Department of Agriculture



Soil Health

PROFILE

Ralph Upton, Jr.
Hamilton County, Illinois





United States Department of Agriculture



USDA United States Department of Agriculture

Coming Together for Conservation: New Approach, More Partners

USDA Natural Resources Conservation Service

- 1 Regional Conservation Partnership Program**
is a new program that mobilizes partnerships to multiply investments and reach common conservation goals.
- 2 More Partners** bring innovation, new ideas, resources and local expertise to solve problems.

Indian Tribes + Nonprofits + State and Local Governments + Private Industry + Water Districts + Universities

Priority Conservation Projects
- 3 RCPP Funding Options**

40% National (multi-state projects)	25% State (state projects)	35% Critical Conservation Areas (areas designated by Secretary)
- 4 USDA plans to invest up to \$1.2 billion**
USDA Goal:
Partners
match investment to equal — **\$2.4 billion**
for conservation through 2018
more: nrcs.usda.gov/FarmBill



United States Department of Agriculture

